

FUEL STANDPIPES



The Fuel Standpipe transfers diesel fuel from the fuel tank to the diesel-fired heater. It is available dual or single draw. Dual draw includes a suction standpipe and a return fuel provision. Single draw can serve as either a suction standpipe or as a return fuel provision.

BENEFITS

- Allows easy retrofitting to dual suction/dual return
- Avoid costly road hazards by converting bottom draw to top draw
- Complete systems available including tank standpipes, fuel tee brackets and hose assemblies



SINGLE DRAW



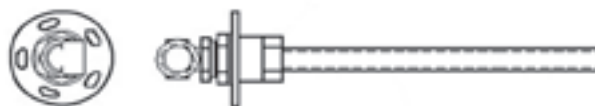
DUAL DRAW

SINGLE DRAW STANDPIPE KIT

PART NUMBER SP-1069

A non-heated standpipe which can be used as a suction standpipe or as a return fuel provision. Fits any size tank up to 29" / 737mm, can be cut to required length by installer. This assembly bolts into a standard USA fuel gauge sending unit size opening if available. Kit includes template and

hardware to easily make additional tank opening when required. For those systems that require special applications we'll design a standpipe with mounting hardware to supply diesel fuel to your fuel fired coolant or cab heater or refrigeration unit from your main fuel supply.



Toll Free: 800-328-6108

Email: sales@phillipsandtemro.com

www.phillipsandtemro.com

PHILLIPS & TEMRO
industries®

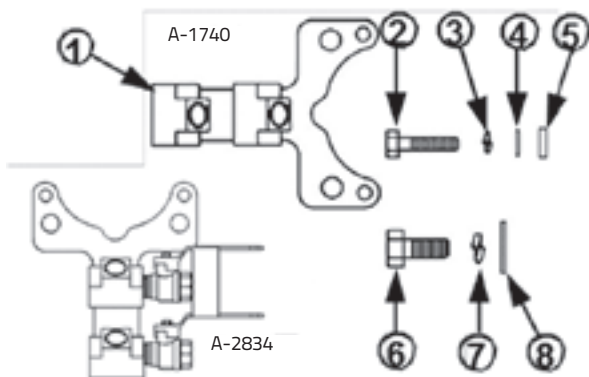
FUEL STANDPIPES

Part Number	Measured Outside Tank Dimension
SP-1662-13	13"-13-7/8" (330mm-353mm)
SP-1662-14	14"-14-7/8" (356mm-379mm)
SP-1662-15	15"-15-7/8" (381mm-404mm)
SP-1662-16	16"-16-7/8" (406mm-429mm)
SP-1662-17	17"-17-7/8" (432mm-455mm)
SP-1662-18	18"-18-7/8" (457mm-480mm)
SP-1662-19	19"-19-7/8" (483mm-506mm)
SP-1662-20	20"-20-7/8" (508mm-531mm)
SP-1662-21	21"-21-7/8" (533mm-556mm)

Part Number	Measured Outside Tank Dimension
SP-1662-22	22"-22-7/8" (559mm-582mm)
SP-1662-23	23"-23-7/8" (584mm-607mm)
SP-1662-24	24"-24-7/8" (610mm-633mm)
SP-1662-25	25"-25-7/8" (635mm-658mm)
SP-1662-26	26"-26-7/8" (660mm-683mm)
SP-1662-27	27"-27-7/8" (686mm-709mm)
SP-1662-28	28"-28-7/8" (711mm-734mm)
SP-1662-29	29"-29-7/8" (737mm-760mm)
SP-1662-30	30"-30-7/8" (762mm-785mm)

Specify curved (c) tank or flat (f) tank

TRANSMISSION MOUNTED DUAL TEE BRACKET ASSEMBLY



Ref #	Part Number	Description
1	A-1740 A-2834	Bracket kit includes reference numbers 1 through 8 Bracket with dual Tee & Shut-Off valves include reference numbers 1 through 8
2	A-1744	7/16" / 11mm UNC x 2" / 512mm long Grade 8 bolt (2)
3	A-1745	7/16" / 11mm Split Ring Lock Washer (2)
4	A-1746	7/16" / 11mm SAE Flat Washer (2)
5	A-1747	7/16" / 11mm I.D. x 1/4" / 6mm Thick Spacer (2)
6	A-1742	5/8" / 16mm UNC x 1-1/2" / 38mm Long Grade 8 Bolt (2)
7	A-1743	5/8" / 16mm Split Ring Lockwasher (2)
8	A-1648	5/8" / 16mm SAE Flat Washer (2)

CAUTION: It is extremely important suction and return hoses to left and right fuel tanks be identical in I.D., length and installation elevation.

9700 West 74th Street, Eden Prairie, MN 55344

Phone: 952-941-9700 • Toll-Free: 800-328-6108 • Fax: 952-941-2285
 sales@phillipsandtemro.com • customerservice@phillipsandtemro.com

#LIT0038A ©2017 PHILLIPS & TEMRO INDUSTRIES PRINTED IN U.S.A.

PHILLIPS & TEMRO
 industries®

www.phillipsandtemro.com • www.arctic-fox.com