



# In-Tank Fuel and Fluid Heaters

## OVERVIEW

### FEATURES

- Option to order factory assembled to fit any tank from 14" to 29" (356mm to 737mm)
- Custom built fluid heaters may be requested

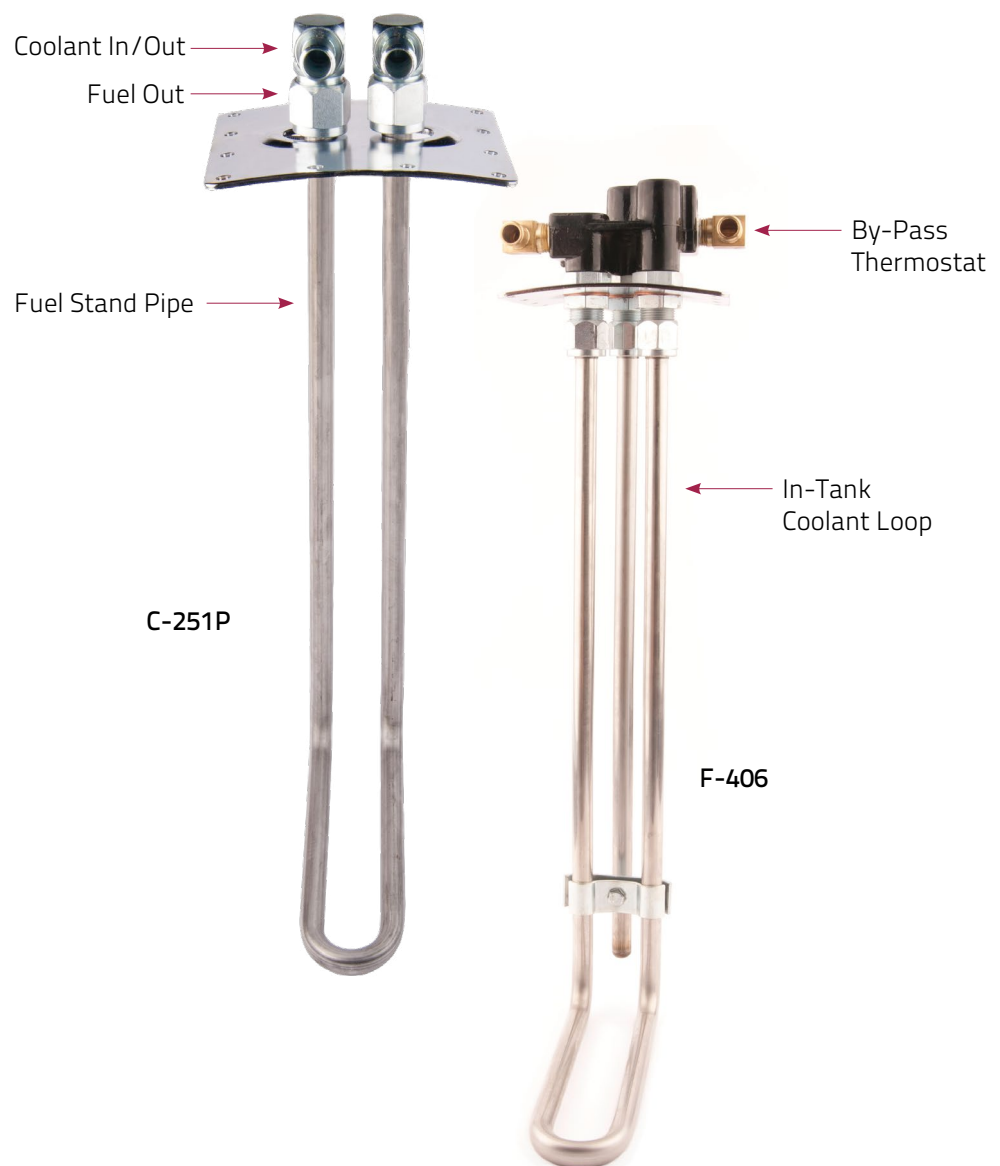
### BENEFITS

- Integral design fits all fuel tanks, simplifies plumbing and reduces fittings
- Fully mechanical thermostat (optional)
- Maintains temperature levels which are recommended by engine manufacturers and keeps the in-tank fuel within the recommended temperature for maximum horse power

### APPLICATIONS

- Heavy Duty Trucks

The original Arctic Fox® fuel heater. This all stainless steel loop fits flat or curved tanks to warm fuel or other fluids. Available with or without a thermostat.



# In-Tank Fuel and Fluid Heaters

## IN-TANK FUEL HEATERS WITHOUT THERMOSTAT

Kit warmers without thermostat (factory assembly available)

Part No.	Tank Depth	Coolant Hose	Fuel Standpipe
C-201	Round 22" through 29" (559mm through 737mm)	5/8" Hose Barb and 1/2" Female NPT	No
C-251	Round 22" through 29" (559mm through 737mm)	5/8" Hose Barb and 1/2" Female NPT	Yes
CS-201	Round 14" through 21" (356mm through 533mm)	5/8" Hose Barb and 1/2" Female NPT	No
F-203	Flat 14" through 29" (356mm through 737mm)	5/8" Hose Barb and 1/2" Female NPT	No

## IN-TANK FUEL HEATERS WITH THERMOSTAT

ORDERING INFORMATION: ALL warmers are factory pre-assembled. Order warmers based upon outside tank dimension.

Example C-406-XX—if tank outside dimension is 27" / 686mm, order C-406-27

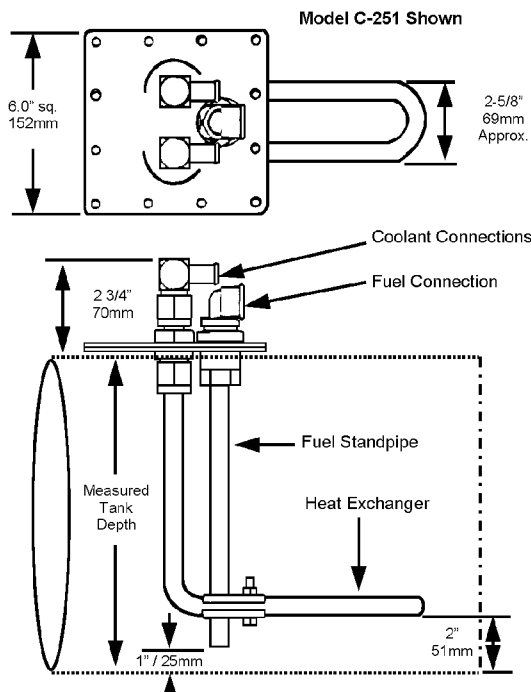
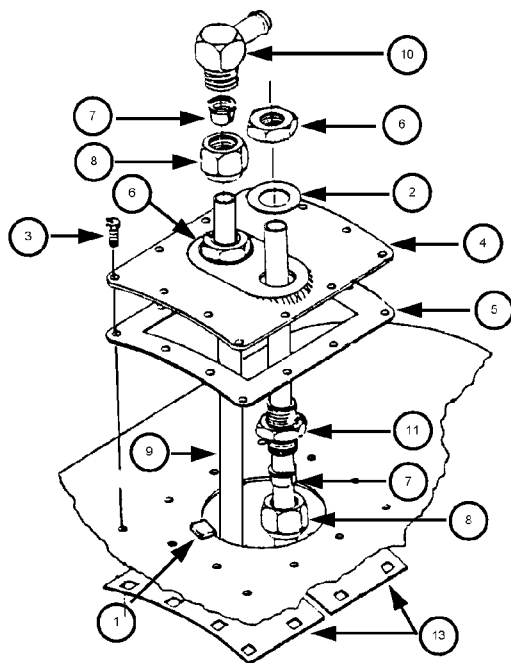
NOTE: WARRANTY IS VOID IF DISASSEMBLED

Part No.	Tank Depth	Coolant Hose	Fuel
C-406-XX	Round 22" through 29" (559mm through 737mm)	5/8" Hose Barb	No
C-407-XX	Round 22" through 29" (559mm through 737mm)	3/4" Hose Barb	No
C-456-XX	Round 22" through 29" (559mm through 737mm)	5/8" Hose Barb	Yes
C-457-XX	Round 22" through 29" (559mm through 737mm)	3/4" Hose Barb	Yes
CS-406-XX	Round 14" through 21" (356mm through 533mm)	5/8" Hose Barb	No
CS-407-XX	Round 14" through 21" (356mm through 533mm)	3/4" Hose Barb	No
CS-456-XX	Round 14" through 21" (356mm through 533mm)	5/8" Hose Barb	Yes
CS-457-XX	Round 14" through 21" (356mm through 533mm)	3/4" Hose Barb	Yes
F-406-XX	Flat 14" through 29" (356mm through 737mm)	5/8" Hose Barb	No
F-407-XX	Flat 14" through 29" (356mm through 737mm)	3/4" Hose Barb	No
F-456-XX	Flat 14" through 29" (356mm through 737mm)	5/8" Hose Barb	Yes
F-456-XX	Flat 14" through 29" (356mm through 737mm)	3/4" Hose Barb	Yes

See catalog for replacement parts

# In-Tank Fuel and Fluid Heater

## Service Parts



Item No.	Qty.	Description	Part No.
1	4	Retaining Clip – (Included in Installation Kit)	Not sold separately
2	2	Copper Washer	A-616
3	12	Mounting Bolt – (Included in Installation Kit)	A-610
4	1	Curved 2-Hole Plate – Flat Plate option listed below	Not sold separately
5	1	Gasket – (Included in Installation Kit)	A-611
6	2	Locking Nut	A-628
7	4	Split Ring Ferrule	A-621
8	4	Compression Nut	A-639
9	1	Heat Exchanger Tube 28" / 711mm	Not sold separately
10	2	5/8" Tube Fitting Elbow to 5/8" / 16mm Hose Barb (Includes 7 & 8) – Flat Plate option listed below	A-613
11	2	Bushing (Includes 6, 7, & 8)	A-612
12	8	O-Ring Kit (Package Contains 4 Each White & Black O-Rings) – NOT SHOWN	A-617
13	2	Curved Back-Up Plate – Flat Plate option listed below	Not sold separately
Flat Plate Option 4	1	Flat 2-Hole Plate	A-414-2
Flat Plate Option 10	2	5/8" Tube Fitting Elbow to 1/2" Female NPT	A-619
Flat Plate Option 13	2	Flat Back-Up Plate	Not sold separately
Misc.	N/A	Curved Cover Up Kit – 22" Through 29" / 559mm Through 737mm Tanks	KT-1909
Misc.	N/A	Curved Cover Plate – 22" Through 29" / 559mm Through 737mm Tanks	KT-1909
Misc.	N/A	Flat Cover Up Kit	KT-1911
Misc.	N/A	Flat Cover Up Plate	KT-1911
Misc.	N/A	Curved Cover Up Kit – Up To 22" / 559mm Tanks	KT-1910