

**INSTALLATION
INSTRUCTIONS**

FIAT 8060 SERIES ENGINES

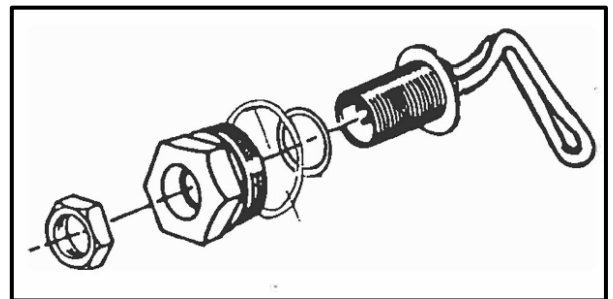
CAUTION



DO NOT plug in heater if heating element is not immersed in coolant. If not immersed, element sheath may burst and could result in personal injury.
DO NOT use heater in coolant system containing any form of stop-leak additive.
DO NOT use heater in coolant system containing anything other than the recommended mixture of ethylene glycol and water (ie: 60-40 max).

HEATER INSTALLATION PROCEDURE

1. Drain engine coolant. Clean cooling system when necessary.
2. Remove 42mm threaded plug located between cylinders 5 & 6 on right side of engine.
3. Assemble heater assembly and small gasket to adapter with hex nut. Do not tighten nut.
4. Install heater/adapter assembly to engine with sealing (large) washer. Tighten adapter.
5. Rotate heater element both directions until it touches inside of block. Position elements halfway between limits of rotation and tighten hex nut to 20 to 30 ft. lbs. torque.

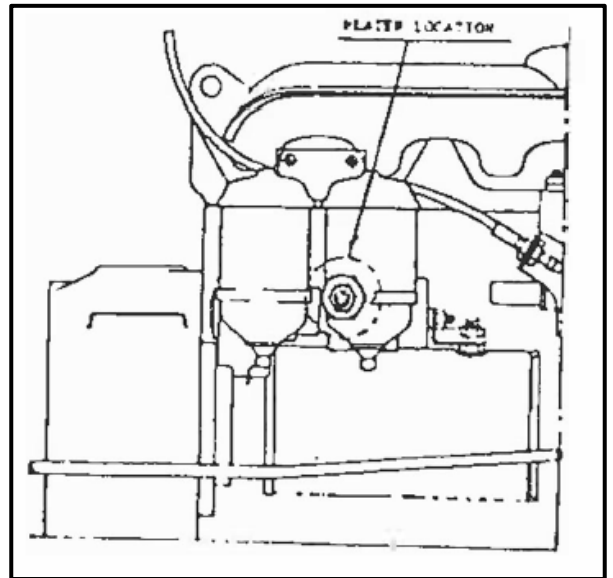


NOTE



DO NOT allow element to turn while tightening nut.

6. Insert power cord connector into socket, being careful to align pins with sockets of connector on cord. Press plug firmly into socket. Tighten strain relief nut securely by hand.
7. Allow slack for engine vibration and protect cord from excessive heat and also from possible chafing or mechanical damage.



CAUTION



Fill cooling system completely with good grade permanent antifreeze and operate engine until all trapped air is removed before turning heater power on.

NOTE



Due to impurities found in most cooling systems, we recommend the installation of an adequate water filtration system.

CAUTION



Do not start engine with heater plugged in. Turbulence and air bubbles can cause hotspots on heating element and can result in element failure.

WARRANTY

The Phillips & Temro Industries warranty statement is located on the website at phillipsandtemro.com/terms.