

**INSTALLATION  
INSTRUCTIONS**

**CAT C/13/C15 STOR  
FITTING THERMOSTATS**



**WARNING:** Personal injury, never operate heater if element is not immersed in coolant. Element sheath could burst and cause personal injury.



**CAUTION:**

Heater Damage: NEVER run engine while heater is in operation. Shortened heater life will result.  
Heater Damage: DO NOT use stop leak additives or improper coolant mixtures, shortened heater life will result.

**GENERAL INFORMATION**

1. Drain engine coolant below thermostat housing level. This amount will vary depending on engine and radiator capacity.
2. For CAT C13 thermostat: Remove one of the two possible 3/4-16" plugs located at the front of the thermostat housing behind the radiator fan (see Figure 1).
3. For CAT C15 thermostat: Remove one of the two possible 3/4-16" plugs located at the top of the thermostat housing below the coolant inlet hose (see Figure 2).
4. Install thermostat assembly. Torque to 20 Nm (15 ft-lb).
5. PTI thermostats require the use of a PTI Serles Y-cord. Use of a straight plug is recommended. Contact PTI or your local distributor for the proper cord. Insert power cord connector firmly into socket, taking care to align pins with sockets of connector on cord. Tighten strain relief nut securely by hand.
6. For CAT C13 thermostat: Route cord to block heater located on the rear and side of the oil cooler bonnet on the right side of the engine.
7. For CAT C15 thermostat: Route cord to block heater located on the rear of the oil cooler bonnet on the right side of the engine.
8. Secure cord where necessary to allow slack for engine vibration and ensure that cord does not touch engine, hot pipes, or any moving parts. Connect only to a GFCI protected 120-Volt AC outlet. If an extension cord is used, it must be the three-wire grounded type.
9. Refill cooling system with coolant mixture. Use a standard 50/50 mixture of coolant and water. Do not use more than 60% concentration of coolant as it will reduce the heater life.
10. Run engine up to operating temperature and check for leaks. Let engine run for 5-10 minutes after thermostat opens to ensure all air is bled from system.



**CAUTION:**

Heater Damage: DO NOT operate heater until all air is bled from the system. Shortened heater life will result.

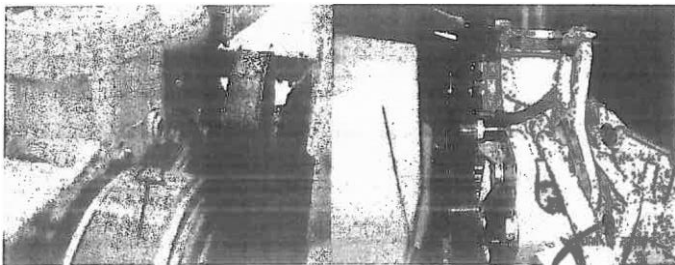


Figure 1 – C13

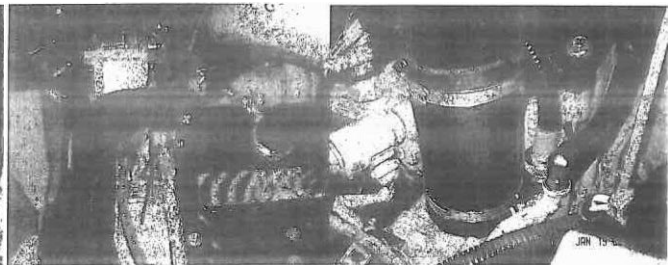


Figure 2 – C15

**WARRANTY**

The Phillips & Temro Industries warranty statement is located on the website at [phillipsandtemro.com/terms](http://phillipsandtemro.com/terms).